



**62 St. Georges Road, Salisbury, Wiltshire, SP2 8LX**

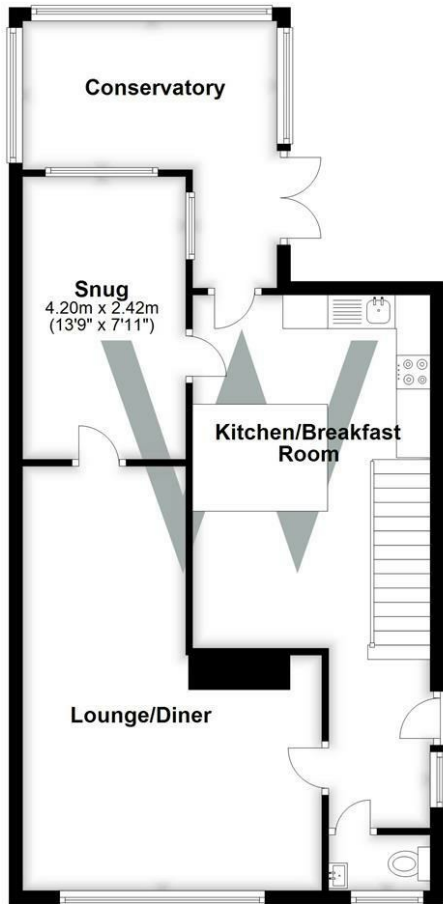
\*\*\* VIEWINGS ON HOLD DUE TO HIGH DEMAND\*\*\*

- WELL PRESENTED
- SOUGHT AFTER LOCATION
- THREE BEDROOMS
- CONSERVATORY
- DRIVEWAY
- SOUTH FACING GARDEN
- GARAGE

**£1,400 PCM**

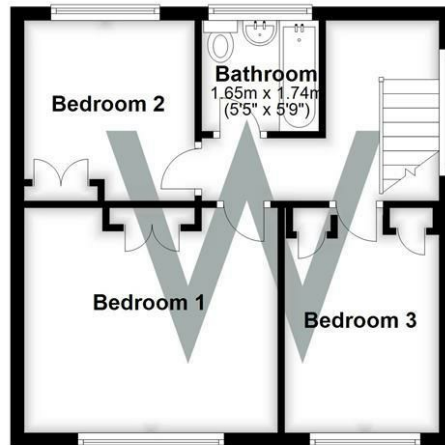
### Ground Floor

Approx. 68.9 sq. metres (741.8 sq. feet)



### First Floor

Approx. 37.8 sq. metres (406.4 sq. feet)



Total area: approx. 106.7 sq. metres (1148.2 sq. feet)

### WHITES

Castle Chambers, 47 Castle Street, Salisbury, Wiltshire, SP1 3SP

Tel: 01722 336422/Option 2

www.hwwhite.co.uk

email: lettings-management@hwwhites.co.uk

Energy Efficiency Rating		Current	Potential
Very energy efficient - lower running costs			
(92 plus) A			
(81-91) B			
(69-80) C			
(55-68) D			
(39-54) E			
(21-38) F			
(1-20) G			
Not energy efficient - higher running costs			
England & Wales		67	82
		EU Directive 2002/91/EC	

Environmental Impact (CO <sub>2</sub> ) Rating		Current	Potential
Very environmentally friendly - lower CO <sub>2</sub> emissions			
(92 plus) A			
(81-91) B			
(69-80) C			
(55-68) D			
(39-54) E			
(21-38) F			
(1-20) G			
Not environmentally friendly - higher CO <sub>2</sub> emissions			
England & Wales			
		EU Directive 2002/91/EC	